



*“The Driving Force in Transportation Construction”*

## ARTBA Presentation

National Bridge Management, Inspection and  
Preservation Conference

November 2, 2011

# Leadership in Washington



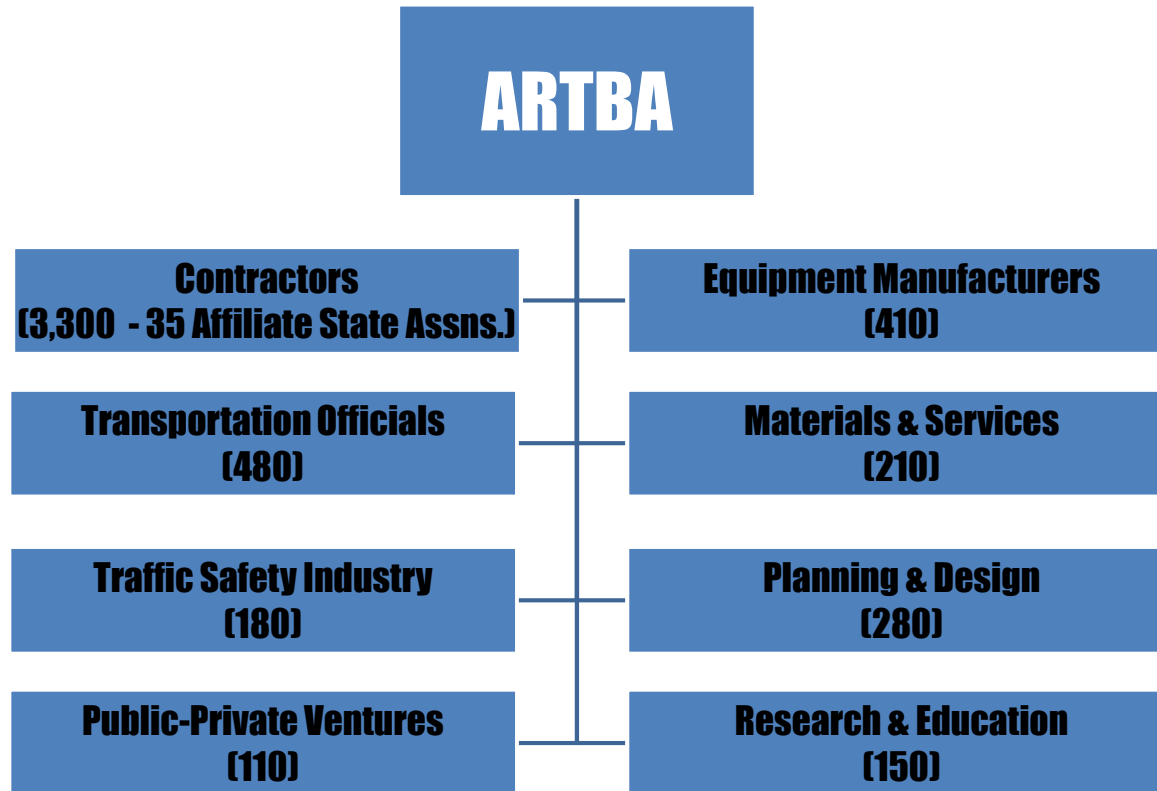
- **Founded in 1902**  
by Horatio Sawyer Earle  
Michigan's First Commissioner of  
Highways
- To Advocate a "Capital  
Connecting  
Government Highway"  
Network

# Leadership in Washington



- Vision Achieved in 1956:  
Creation of Interstate  
Highway Construction  
Program & Highway Trust  
Fund

# Organizational Structure



# The ARTBA Mission

## Develop & Protect Market

Develop &  
Protect the U.S.  
Transportation  
Construction Market  
to Meet Public &  
Business Needs &  
Demand

→ Advocate Strong  
Federal Transportation  
Capital Investment  
Programs



# The ARTBA Mission

## Develop & Protect Market



### Secondary Mission.....

Provide Programs & Services That **Help Member Companies and Agencies Operate More Efficiently & Profitably**

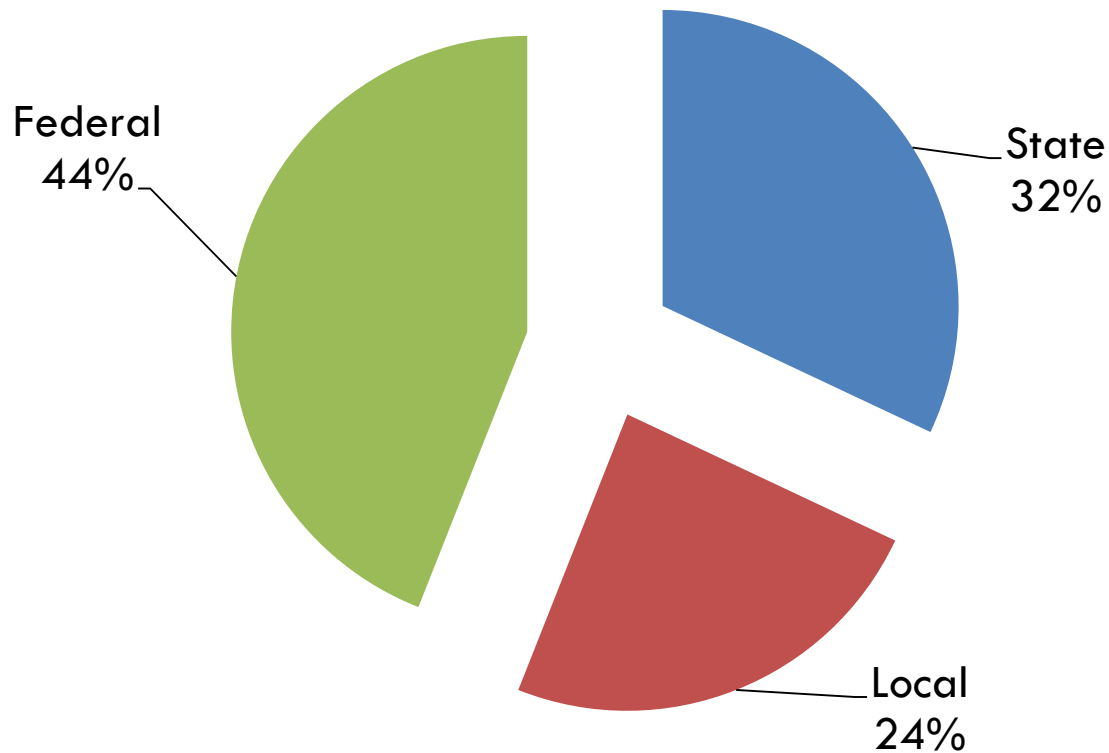
# The ARTBA Management Philosophy



- We are an **Industry Advocate**
- We are **Non-Partisan**
- We are **Not Afraid to Fail!**

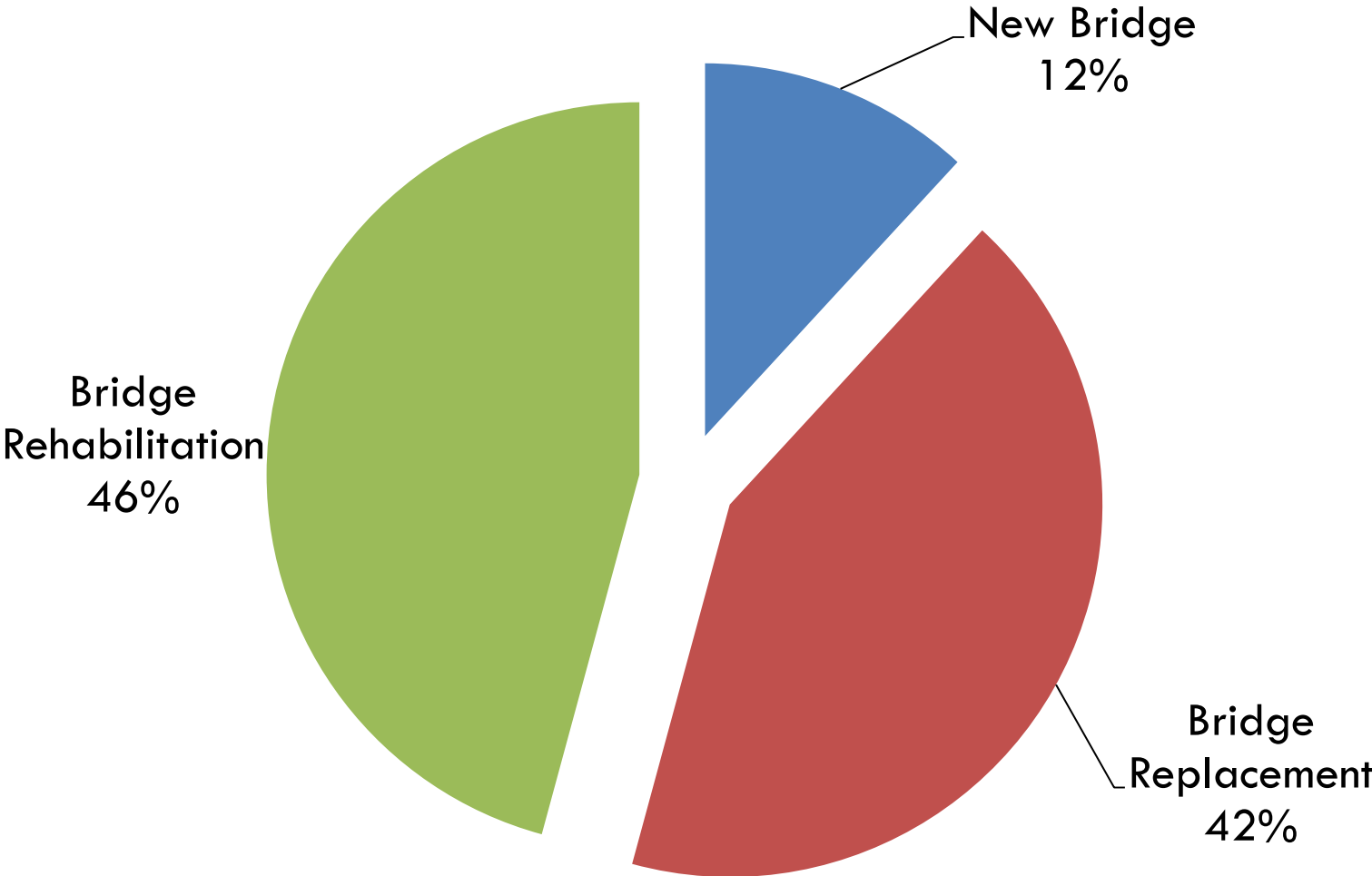
# Sources of Funding for Highway Construction – Federal Highway Program + State and Local Govts

**Sources of Highway Capital Spending**



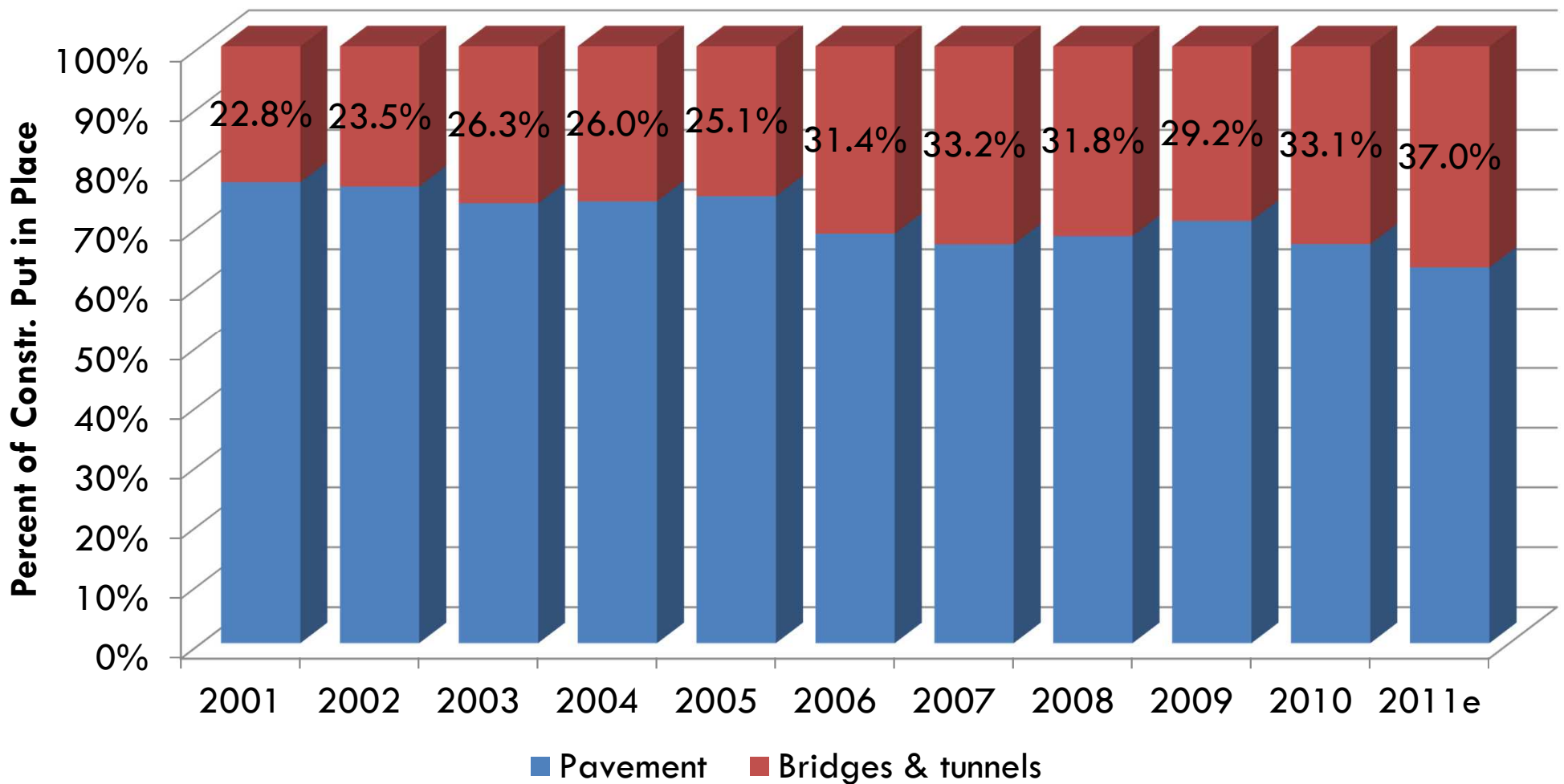


# Distribution of State Bridge Construction Spending



Source: FHWA Highway Statistics Table SF-12A, Average 1999 to 2008.

# States Placing Increasing Emphasis on Bridge Construction



# Current Government Affairs Issues



- SAFETEA-LU expired in September 2009
  - ▣ *(been operating under a series of short term extensions since)*
  
- September 16: The President signed a 6 month highway/transit program extension and a 4 month aviation program extension
  
- President Obama laid out a \$447 billion job creation proposal, the “American Jobs Act” (AJA), during a September 8 joint session of Congress
  - ▣ *(infrastructure portion going to be on the floor in the Senate)*

# Current Government Affairs Issues

- Two Senate Committees are pushing for action on a multi-year bill in the coming weeks.
  1. The bipartisan leaders of the Senate Environment & Public Works (EPW) Committee have authored a two-year measure that would (bill will be considered on November 9)
    - maintain current levels of highway and public transportation investment (plus adjustments for inflation since 2009);
    - streamline the project delivery process;
    - provide states increased flexibility to meet national priorities; and
    - draw in greater private sector investment in transportation improvements.

# Current Government Affairs Issues



2. Senate Finance Committee Chairman Max Baucus has developed a plan to supplement current Highway Trust Fund revenues by \$12 billion to fully pay for the two-year reauthorization proposal.

# Current Government Affairs Issues

- House Transportation & Infrastructure (T&I) Committee is now working to develop a six-year surface transportation reauthorization bill that would attempt to preserve current levels of federal highway and public transportation investment.
  - ▣ Prior to this the focus was to be a six – year bill with about a 30% cut across the board (what HTF can support without increased revenue)
  - ▣ Similar policy items to the Senate proposal

# ARTBA Committees/Councils include:



- Contract Administration Committee
- Young Executive Leadership Council
- **Bridge Policy & Promotion Council**
- Ports and Waterways Council
- High Speed Rail Development Council

# Bridge Policy and Promotion Council (BPPC)

- The BPPC's Action Agenda is led and supported by seven, member-driven "Action Teams" of industry leaders focused on specific missions designed to meet the business needs of the bridge design and construction industry. The Action Teams are:
  - ▣ Bridge Policy & Regulations
  - ▣ Bridge Market Promotion
  - ▣ Bridge Financing Issues
  - ▣ Bridge Inspection Issues
  - ▣ Bridge Project Delivery Methods
  - ▣ New Bridge Technologies
  - ▣ Bridge Preservation Action Team (BPAT)



# Bridge Preservation Action Team

- **BPAT Genesis: “Bridge Preservation Association” Concept—St. Louis (April, 2007)**
- **Roundtable: TRB 2008**
  - **FHWA, NCPP, FP<sup>2</sup>, Agencies (Caltrans, VDOT, NCDOT, LA DOTD, NYSDOT)**
- **AASHTO Monterey – “BPA” Rollout (July 2008)**
- **Supported TSP2 Development (2009-2010)**
- **NHI Webinar w/ FHWA, AASHTO, & BPA (2010)**
- **BPA Founding Members organized the ARTBA Bridge Policy & Promotion Council’s Bridge Preservation ActionTeam (BPAT) mid- 2011.**
  - **Facility, organizational and professional staff support from ARTBA.**

# Bridge Preservation Action Team: Program of Work

## 1. Formation of Potential Subcommittees in these areas:

- ▣ Foundations
- ▣ Super Structures
- ▣ Bearings
- ▣ Joints
- ▣ Drainage
- ▣ Steel Coatings
- ▣ Concrete Coatings
- ▣ Corrosion Protection
- ▣ Deck Wear & Waterproofing
- ▣ Deck Repair
- ▣ Seismic

## 2. Subcommittee Development of “Best Practice” White Papers

## 3. Subcommittee Development of “Best Practice” Webinars

## 4. Continued Interaction with FHWA & AASHTO task forces

# Bridge Preservation Action Team: Program of Work (cont.)

5. Development of BPAT and Bridge Preservation Internet Presence ([www.artbabridgecouncil.org](http://www.artbabridgecouncil.org))
6. Development of ARTBA national policy on bridge preservation
7. Participation in & Support of “TransOvation” innovation in transportation design and construction workshop
8. Development of bridge preservation articles for “Transportation Builder” magazine.

# Bridge Preservation Action Team:

## Overall goals



Providing a “base of operations” for private sector firms to work together and also partner with government agencies to promote and advance bridge preservation activities in the public interest.

# ARTBA Approves Bridge Preservation Definition

- Bridge Preservation
  - ▣ Actions or strategies that prevent, delay or reduce deterioration of bridges or bridge elements, restore the function of existing bridges, keep bridges in good condition and extend their useful life. Preservation actions may be preventive or condition-driven.
- Commentary:
  - ▣ Effective bridge preservation actions are intended to address bridges while they are still in good or fair condition and before the onset of serious deterioration.

# What's New at ARTBA?



- TransOvation
- Women Leaders in Transportation Design and Construction Council
- Ports and Waterways Council
- ITS Council

# Contact Information

---

**ARTBA**

**1219 28<sup>th</sup> Street NW**

**Washington, DC 20007**

**202-289-4434 ext. 305**

Allison Wenograd

Vice President, Member Services

Executive Director, Bridge Policy and Promotion Council

[awenograd@artba.org](mailto:awenograd@artba.org)